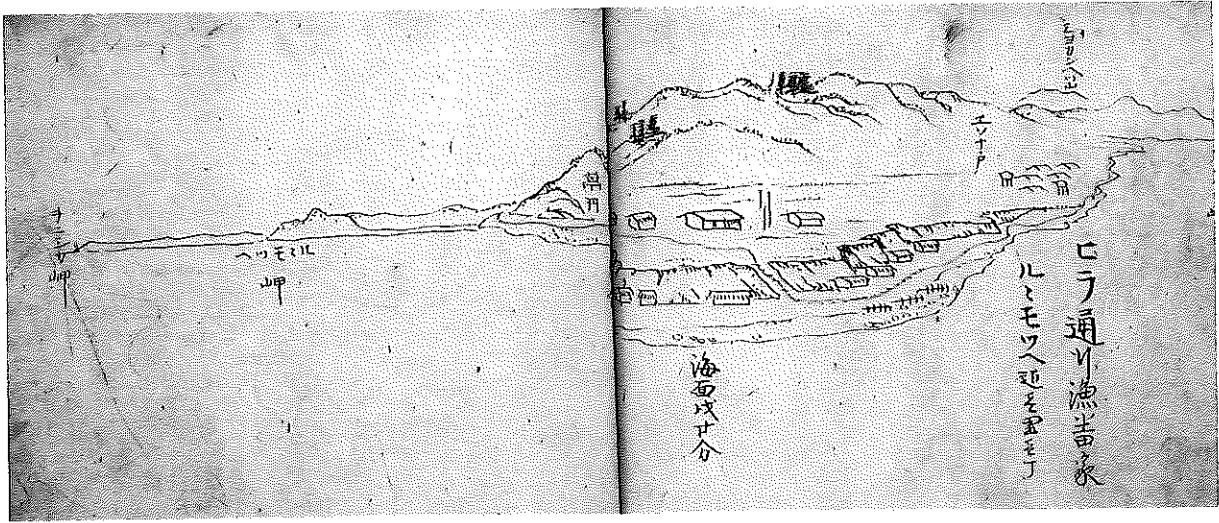
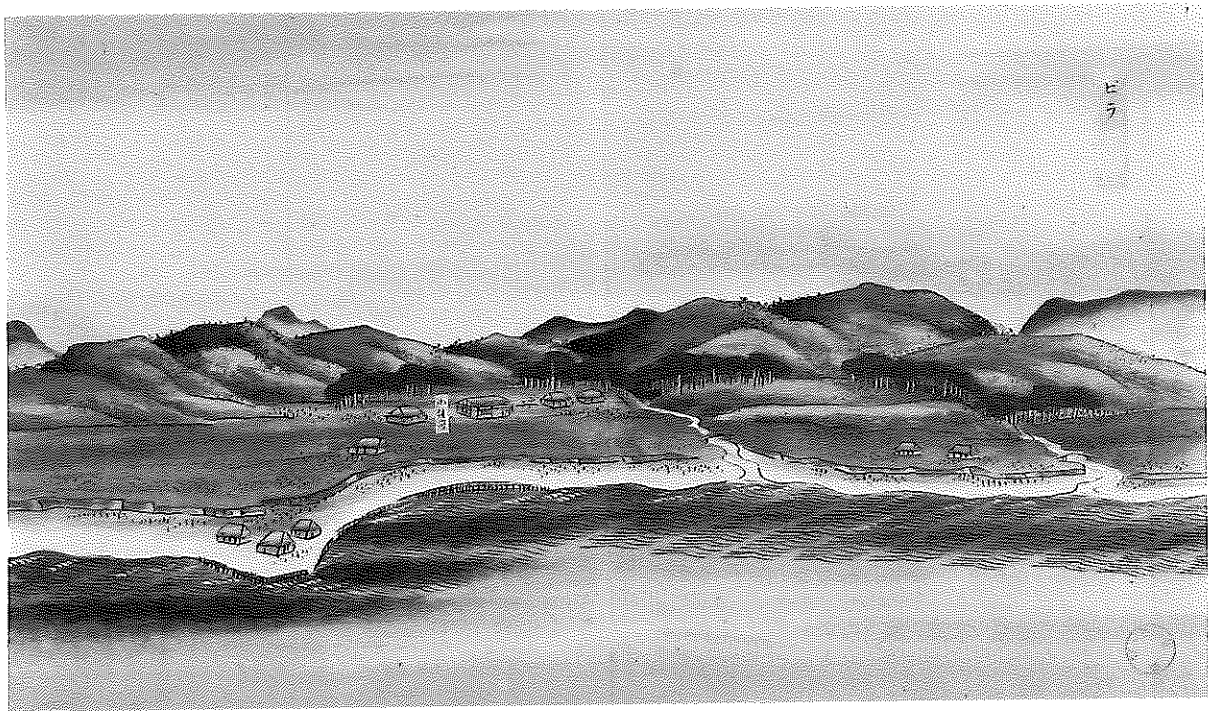


圖 版

図版 1



嘉永 2 (1848) 年の礼受
西蝦夷地道中見取図 (市立函館図書館蔵)



安政 5 (1858) 年の礼受
北海道歴検図 (北海道大学付属図書館蔵)

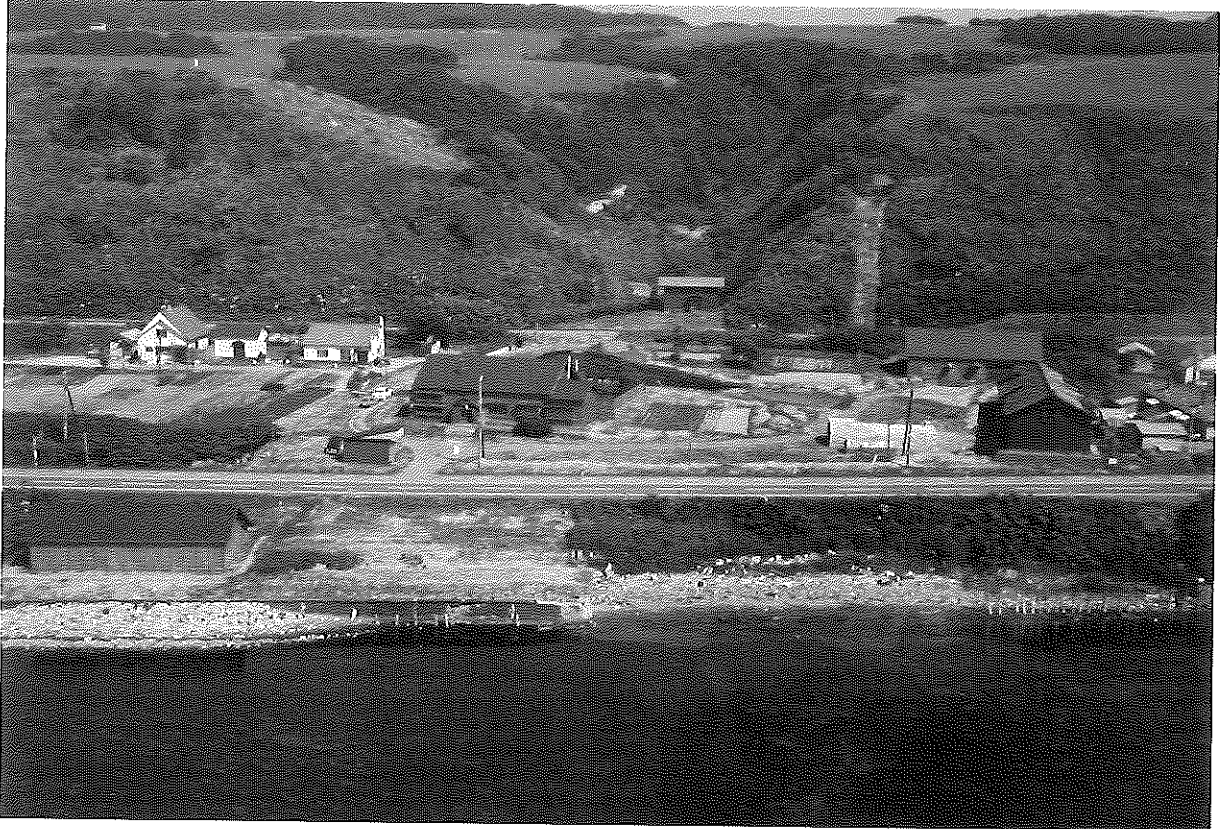


図 (カクダイ) 佐賀家漁場全景



鯨釜を据付た窯跡

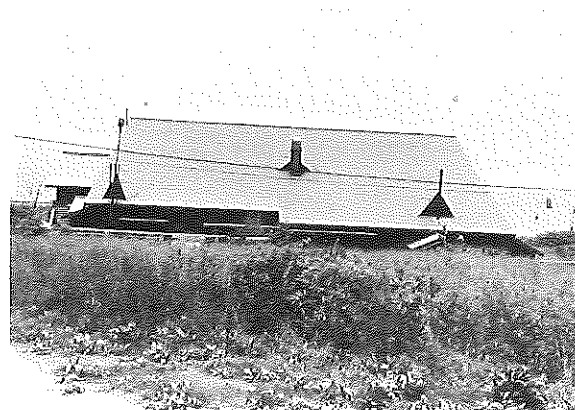


船入れ場（セツの杭が残っている。）

図版 4



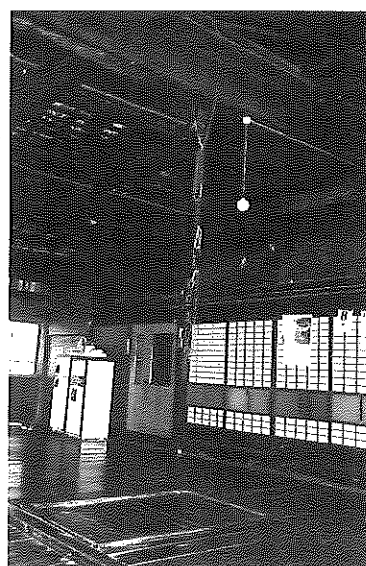
番屋正面



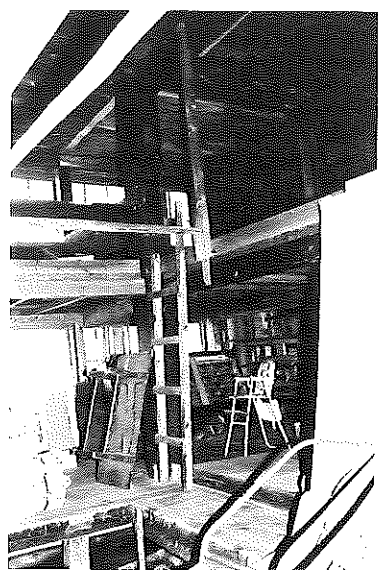
番屋(裏から)



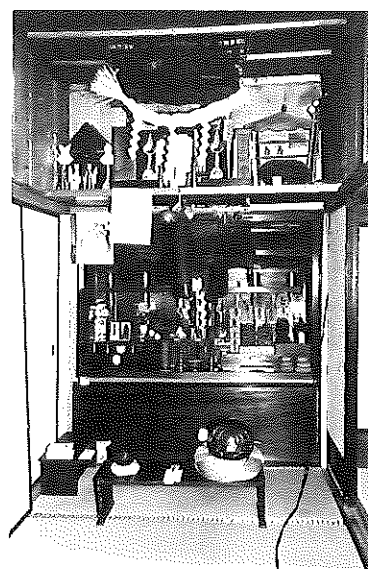
番屋(干場から)



建物内部

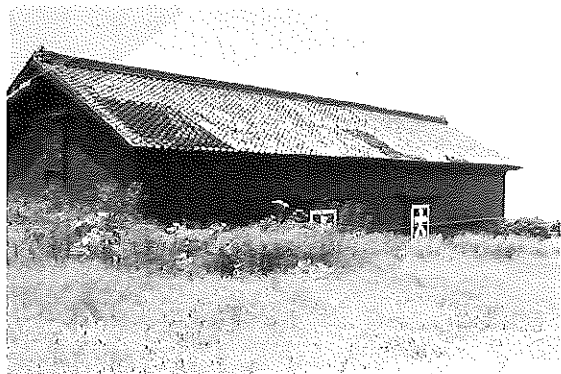


漁夫の寝台



神棚、仏壇

図版 5



トタ倉 (製品保管倉)



トタ倉の棟札



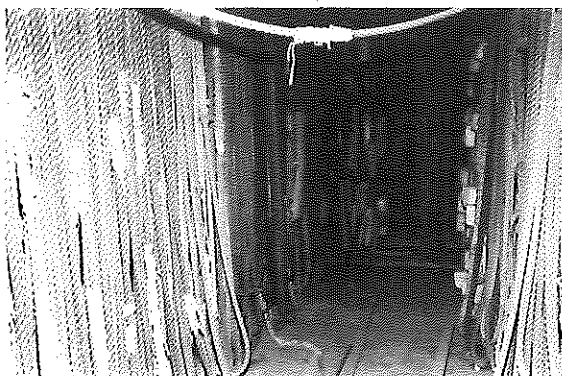
内部の漁撈具



内部の漁撈具



2階への階段

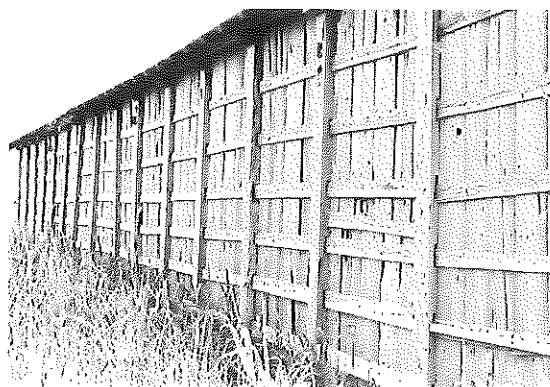


2階の網類

図版 6



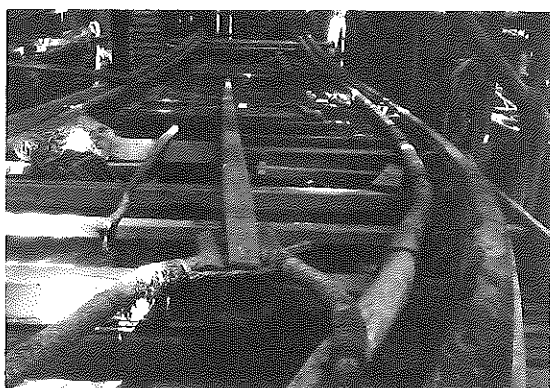
廊 下



廊下 (浜側より)



内部の漁船



内部の漁船

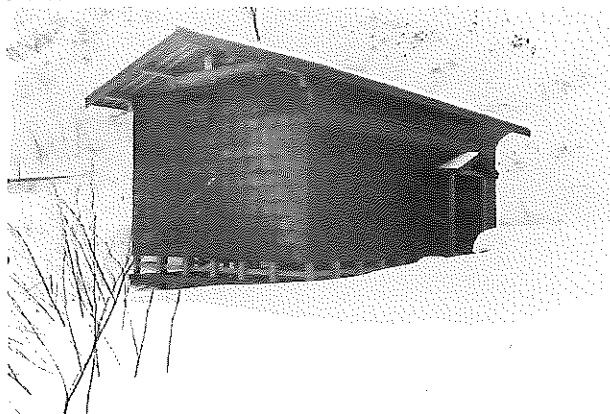


船 倉

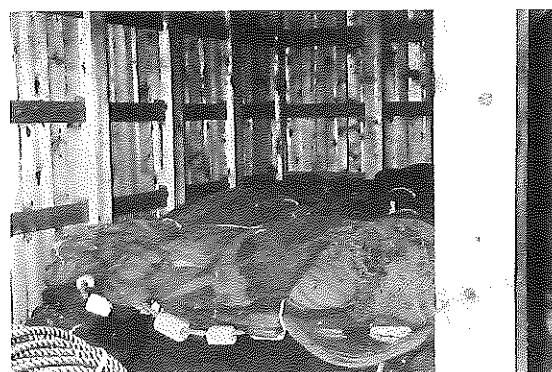


内部の漁船

図版 7



網 倉



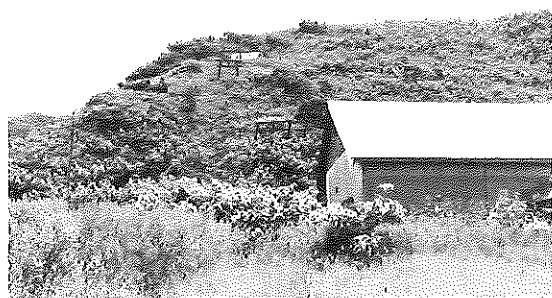
内部の網類



内部の網類



2階の文書類



岡の上の稲荷社

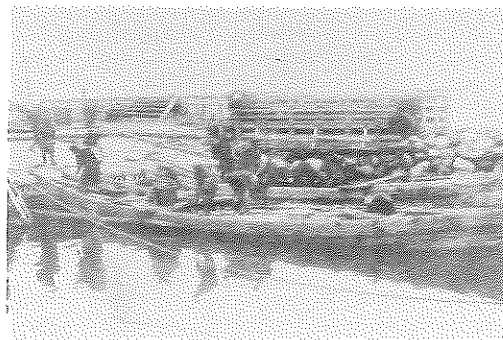


漁場の守神「稲荷社」

図版 8



梓船から汲船へ漁獲した鯨を汲む



ニシンの運搬
(船から陸上の廊下へのモッコによる鯨の運搬。)



鯨つぶし作業
(鯨を裂き、数の子、鰓、白子に選り分ける。鯨は身欠き鯨を作るために納屋場へ持っていき乾燥する。)



身欠き鯨乾燥中の納屋場



鯨絞め粕作り
(鯨釜で煮た鯨は絞め胴に入れられ、压榨される。下から油と水が流れだし、魚油と水を分離し、魚油となる。絞め胴で压榨された鯨は玉と呼ばれ、砕かれて乾燥させ、魚粕となる。)



魚粕の乾燥風景
(筵の上に砕かれて乾燥する。)

図版 9



定置網を建てる直前の漁船
(栈橋が造成されている。)



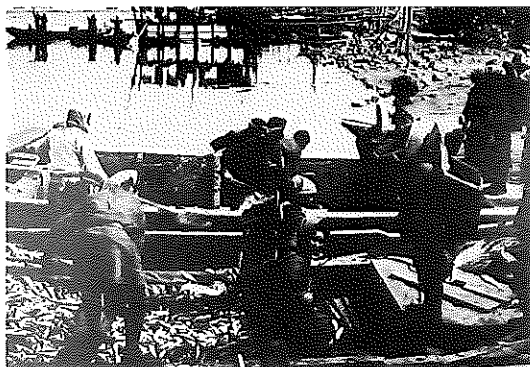
網起こし



大タモによる枠からの鯧汲み揚げ



汲船に満載された鯧



ニシンの運搬
(汲船からポンタモでモッコの中へ)
(鯧をいれ、運搬する。)



ニシンの運搬
(歩み板の上を歩くモッコ背負い。)

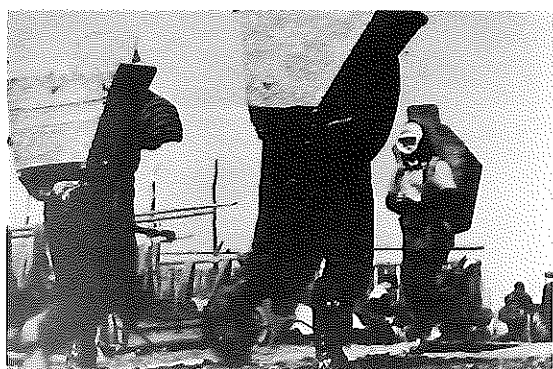
図版10



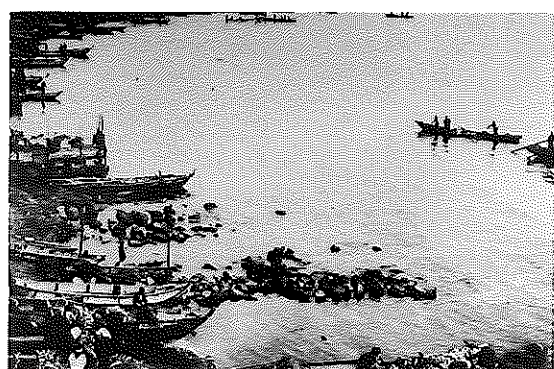
大漁に喜ぶ漁夫



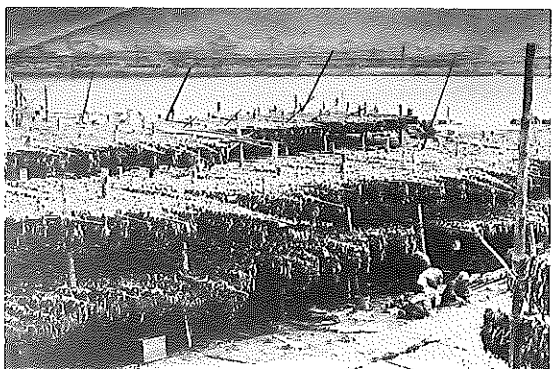
ニシンの運搬
(汲船からポンタモでモッコの中へ)
(練をいれ、運搬する。)



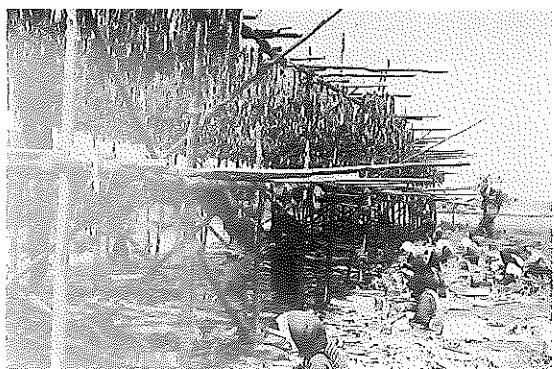
モッコによる運搬



鯨漁風景 (大正年代)



身欠鯨乾燥風景

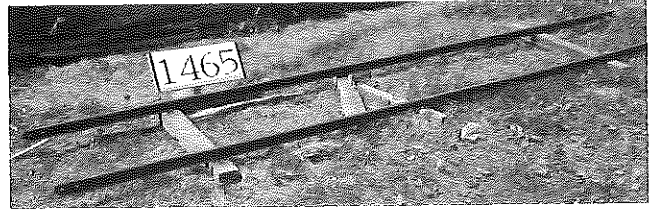


鯨つぶしと納屋場

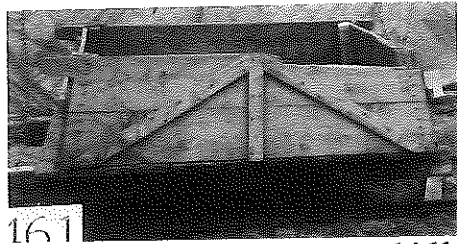
図版11



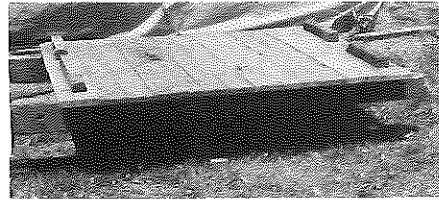
1743



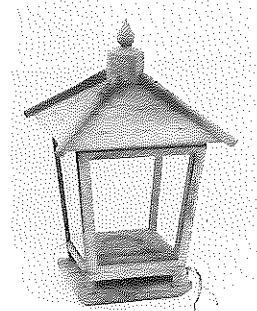
1465



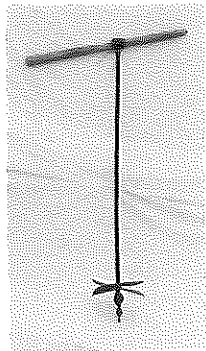
1461



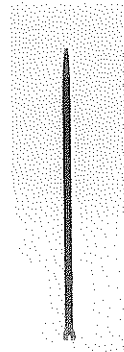
1456



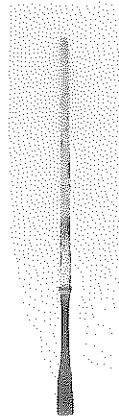
276



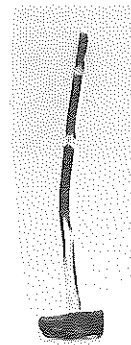
929



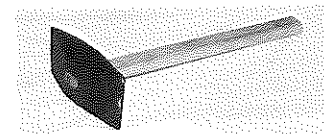
359



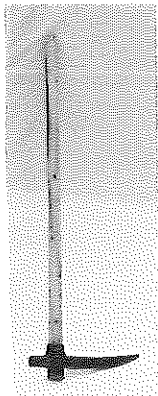
356



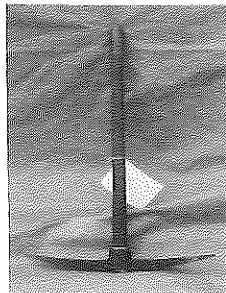
353



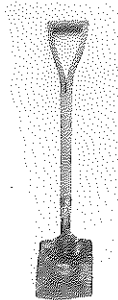
1889



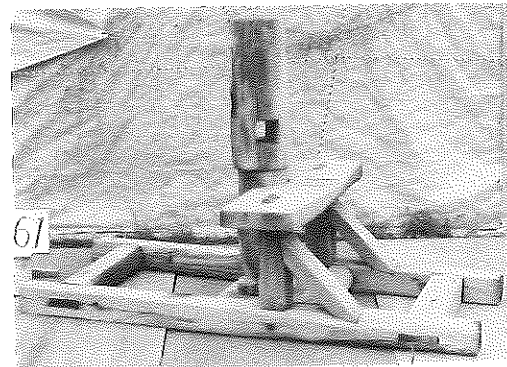
355



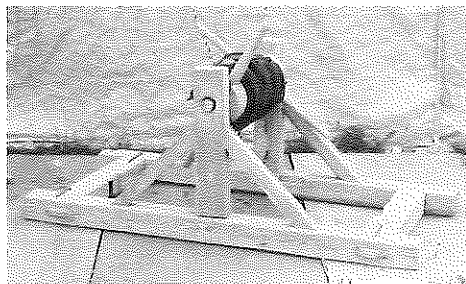
1629



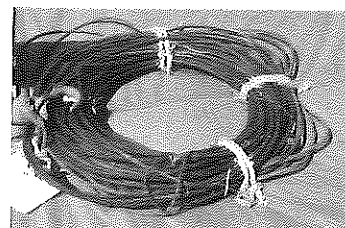
343



361



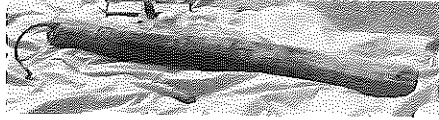
366



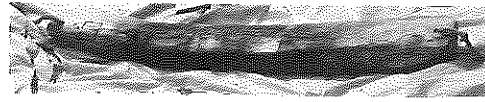
1321

漁場準備用具

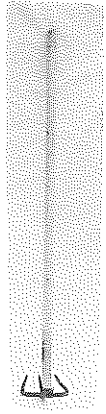
図版12



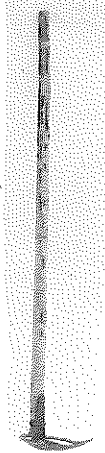
1669



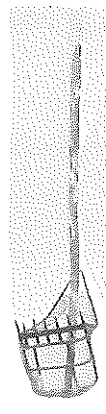
1671



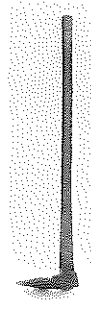
349



346



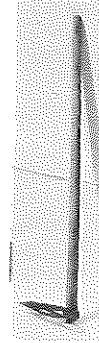
357



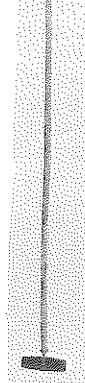
350



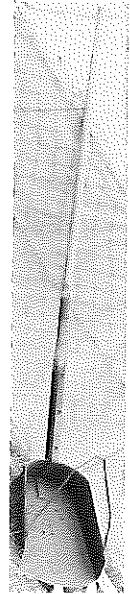
1628



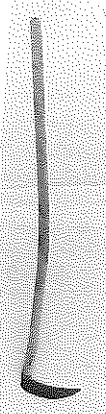
835



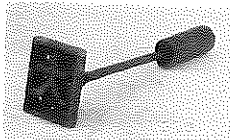
900



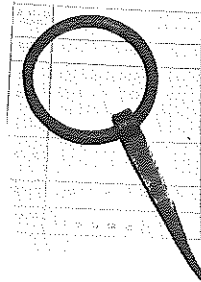
360



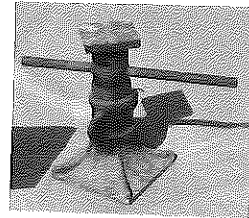
903



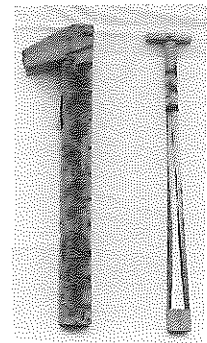
738



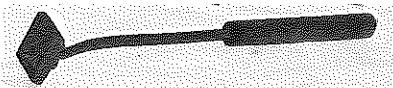
2071



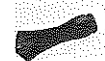
1316



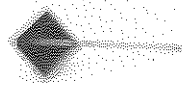
145



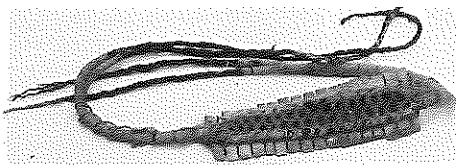
1887



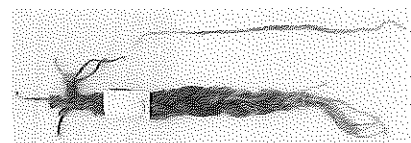
1888



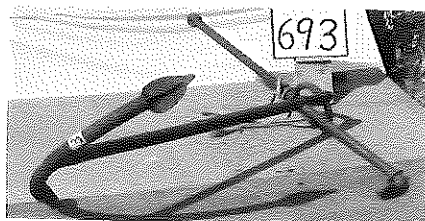
341



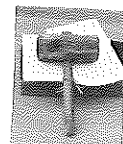
1097



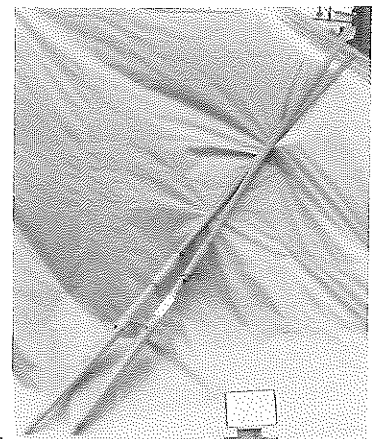
143



693



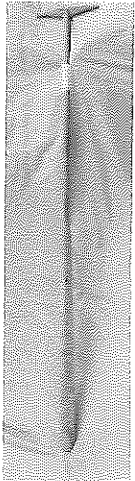
1631



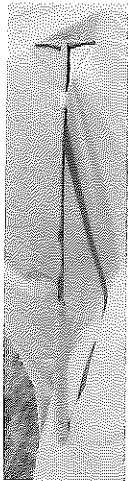
111

漁場準備用具及び漁撈具

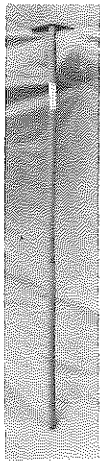
図版13



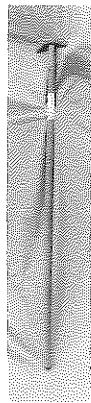
99



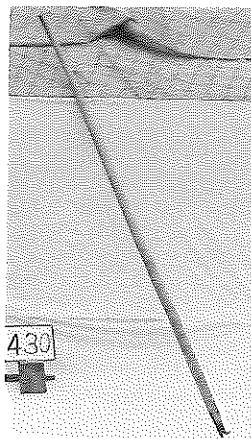
3



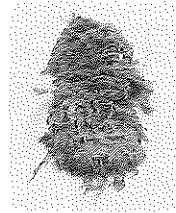
108



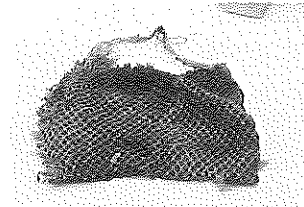
109



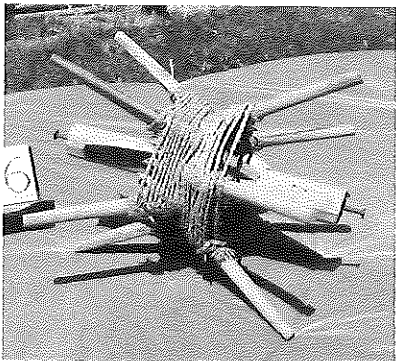
430



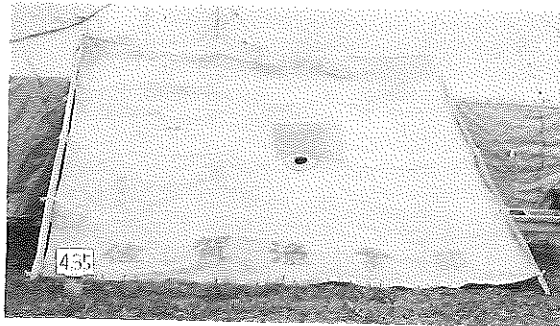
1095



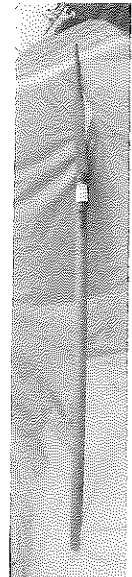
1102



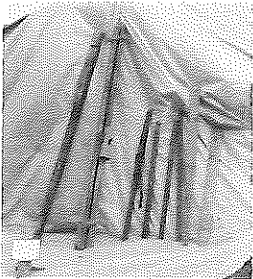
1386



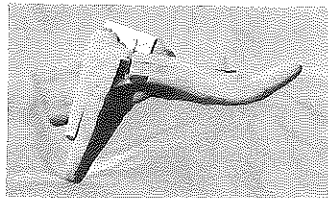
435



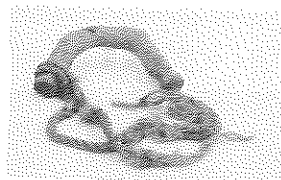
129



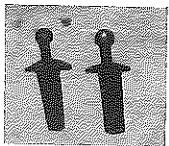
256



1389

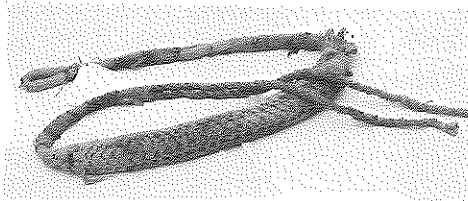


182

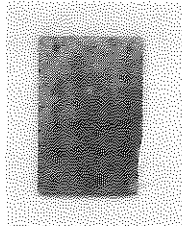


1910

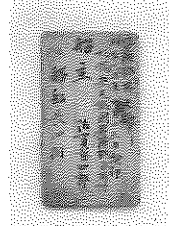
1943



1085



933



934



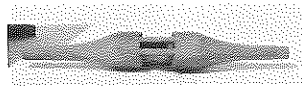
1911



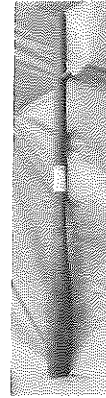
漁 撈 具



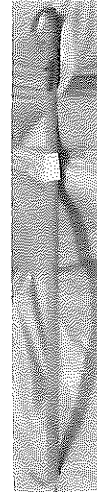
1912



304



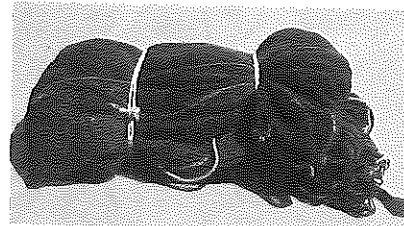
135



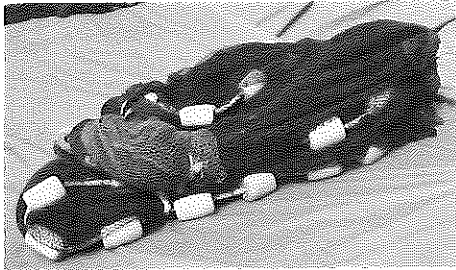
134



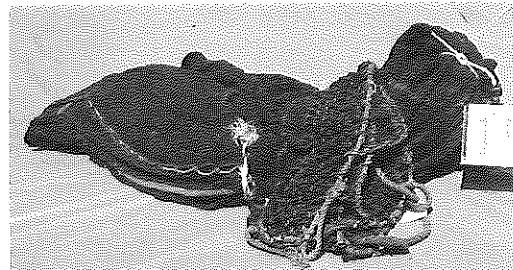
1215



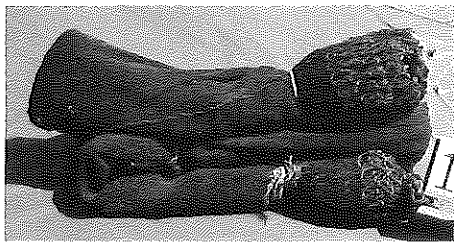
1504



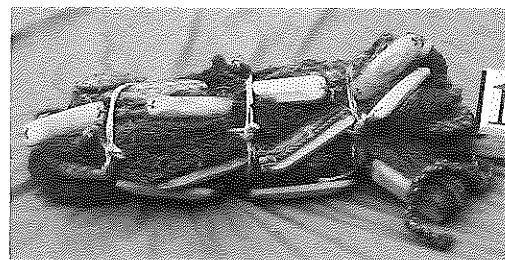
1518



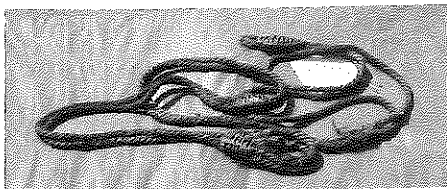
1523



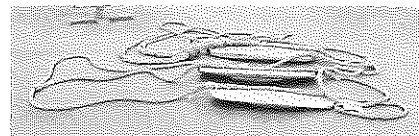
1541



1453

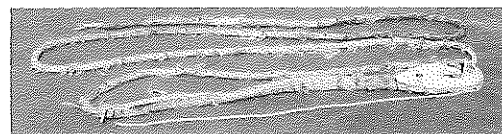
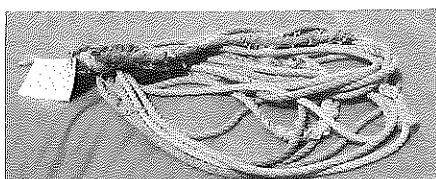


1229



1025

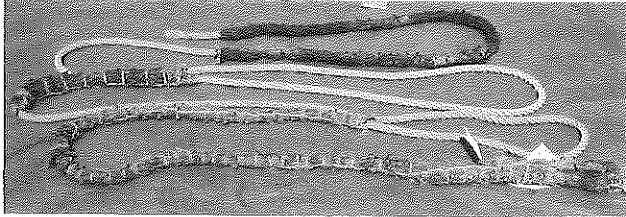
1204



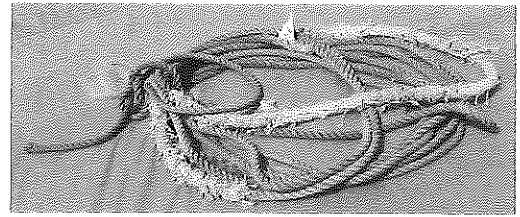
1118

漁 撈 具

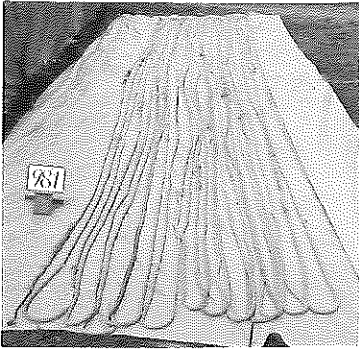
図版15



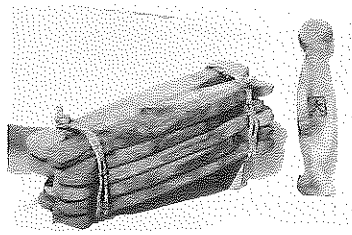
1125



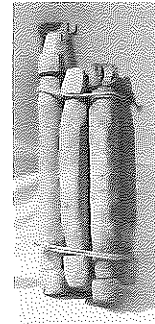
1198



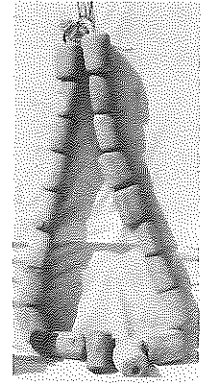
981



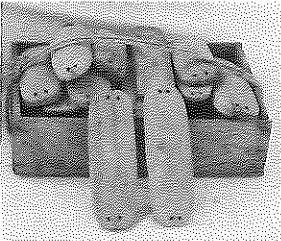
442



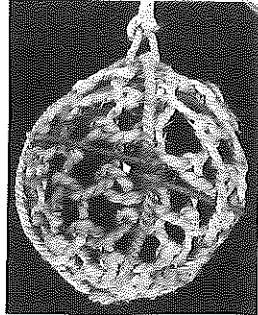
541



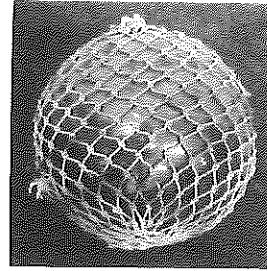
485



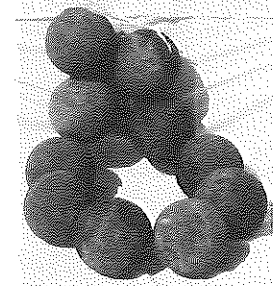
648



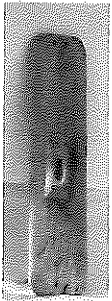
653



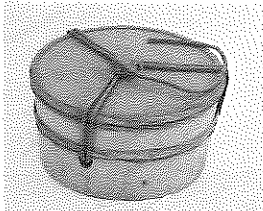
660



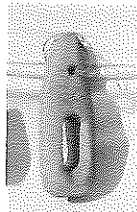
478



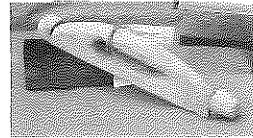
624



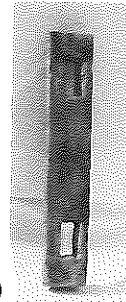
965



675

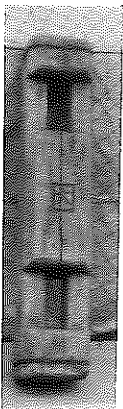


1633

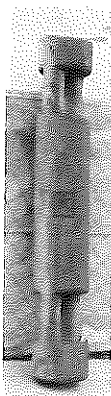


610

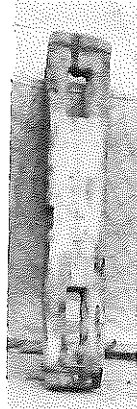
2075



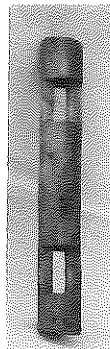
524



530



533

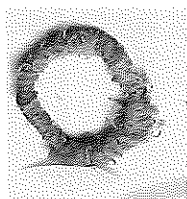


552

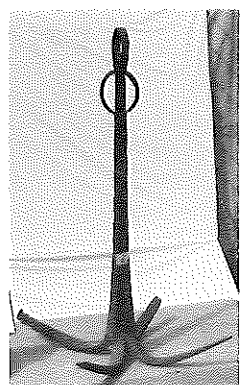


漁 撈 具

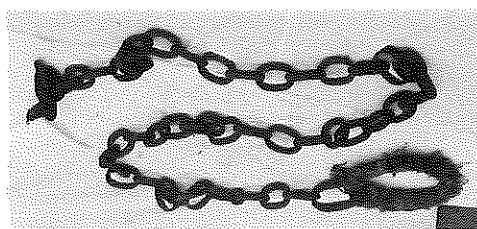
图版16



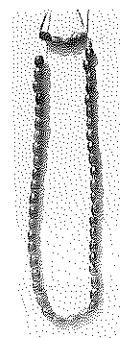
1044



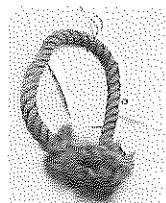
682



975



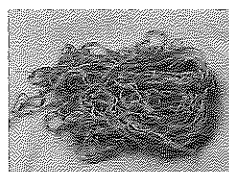
459



1050



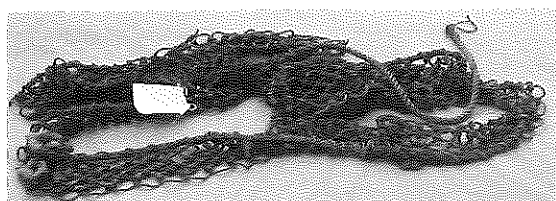
473



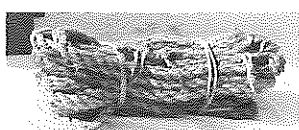
1255



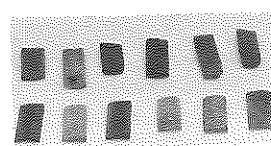
961



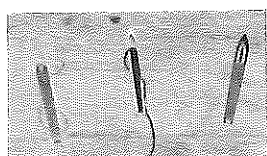
1249



628



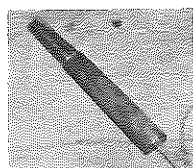
960



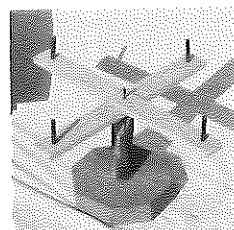
1930



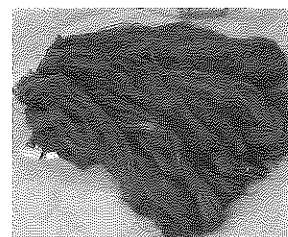
1933



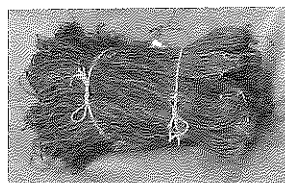
1931



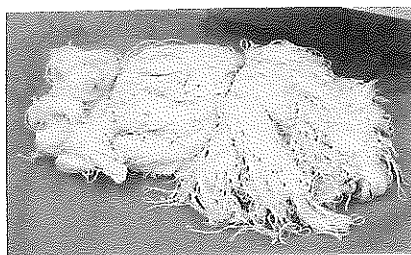
979



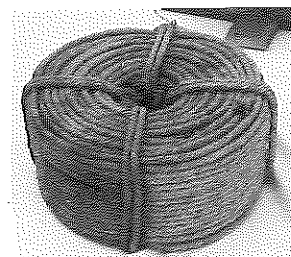
1589



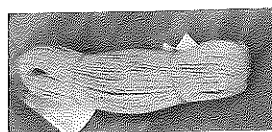
1575



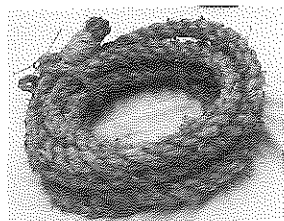
1589



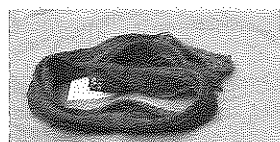
1101



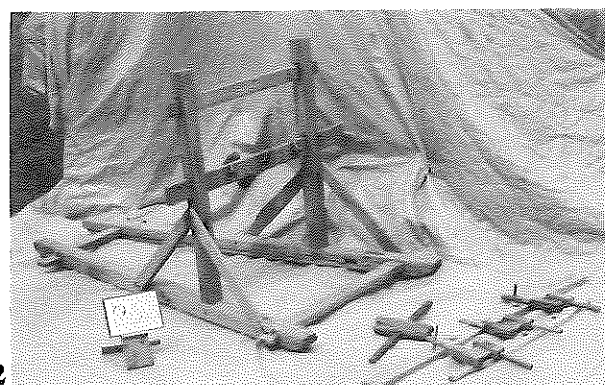
1569



1104



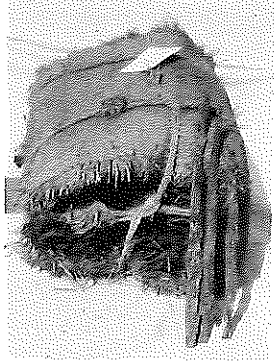
1409



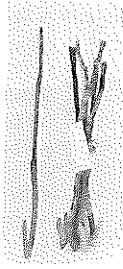
262

漁 撈 具

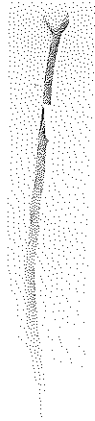
图版17



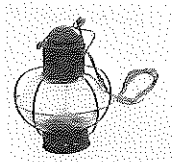
672



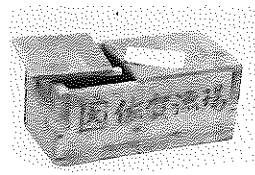
218



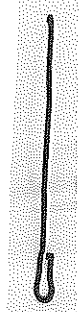
222



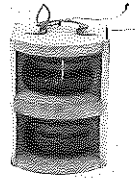
440



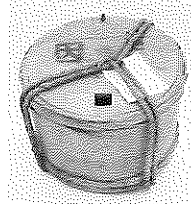
156



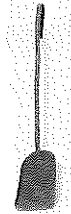
388



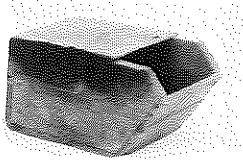
372



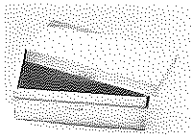
152



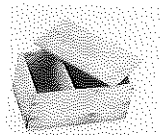
382



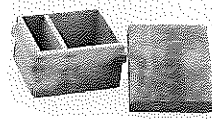
374



200



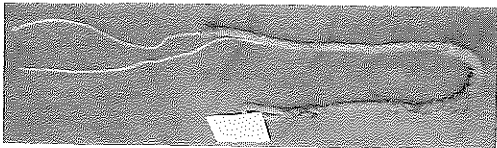
190



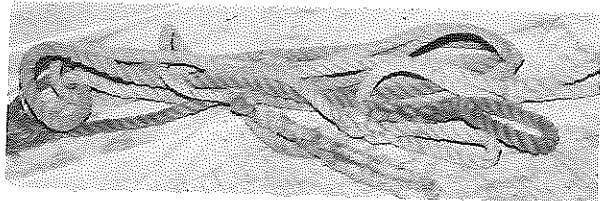
191



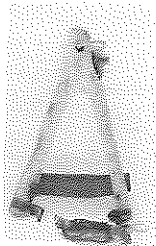
187



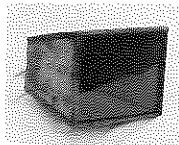
1150



2101



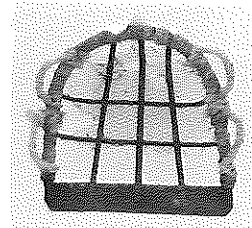
500



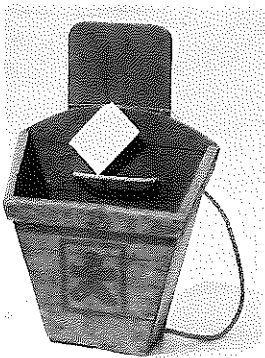
916



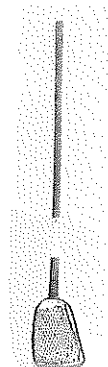
1106



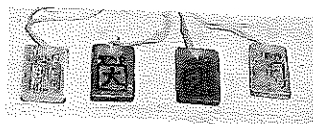
242



307



246



1934



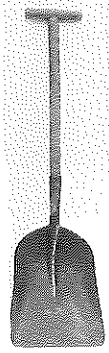
1936



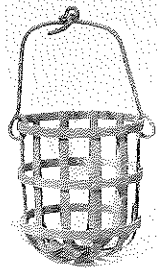
2056

漁 撈 具

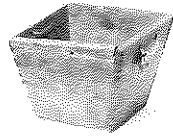
图版18



345



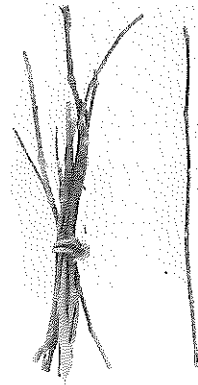
290



283



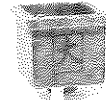
185



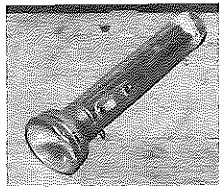
271



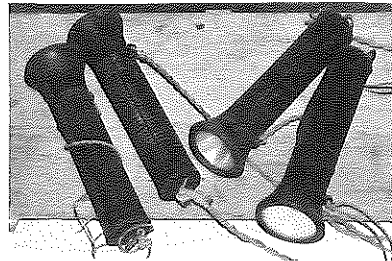
280



289



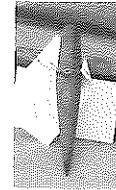
1898



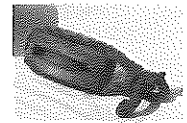
1900



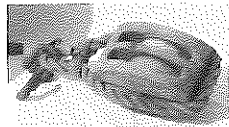
282



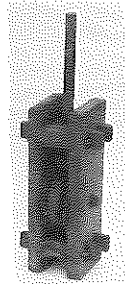
1647



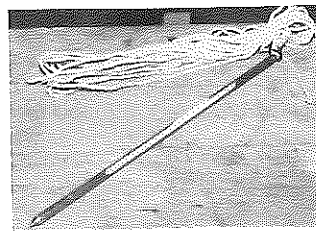
678



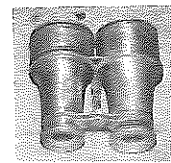
679



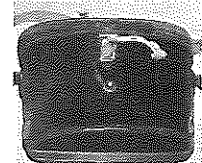
762



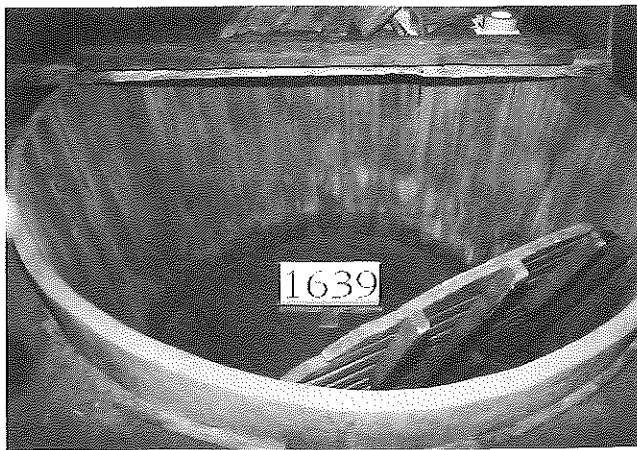
1932



1938

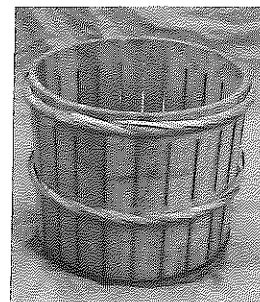


1939

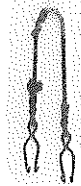


1639

1639

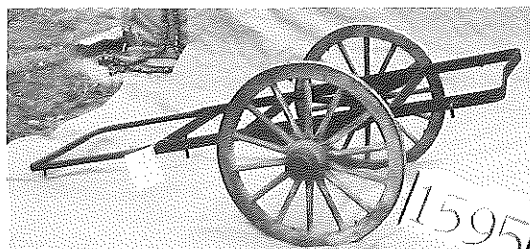


1626



922

1595



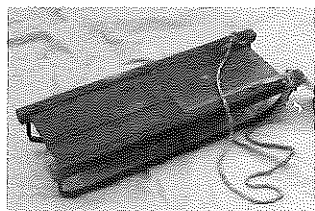
1595



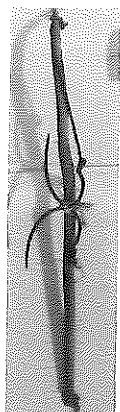
963

漁撈具及び加工用具

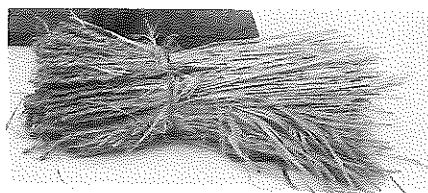
图版19



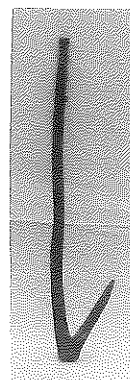
1597



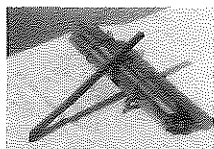
813



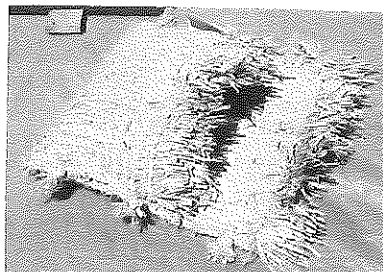
1717



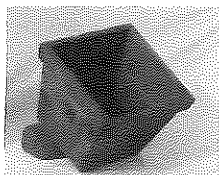
901



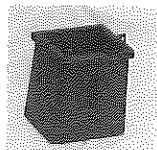
888



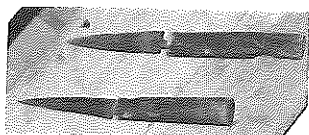
1388



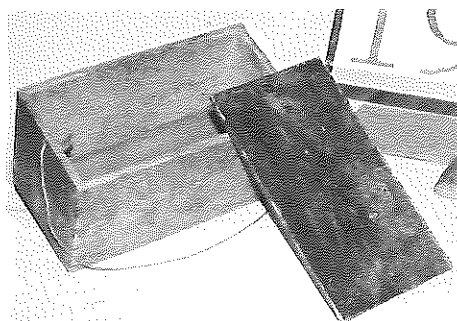
838



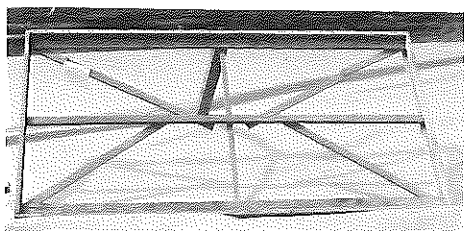
915



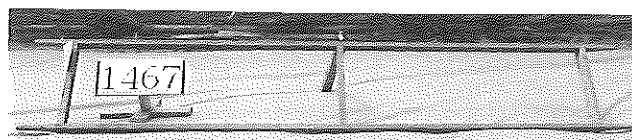
1924



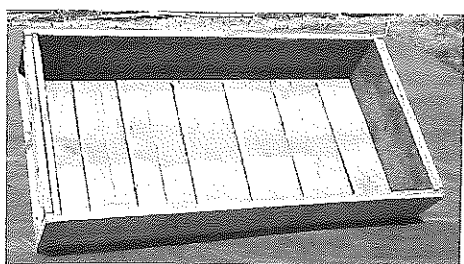
1920



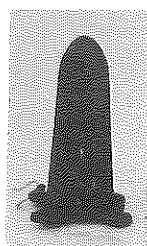
1468



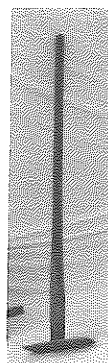
1467



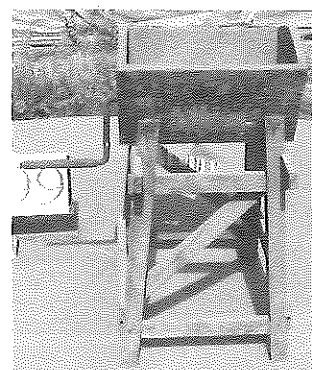
1487



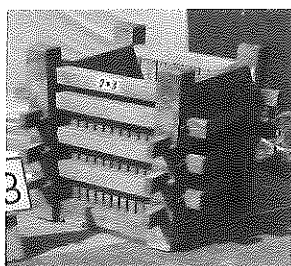
789



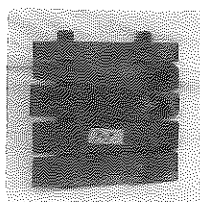
754



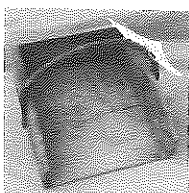
1299



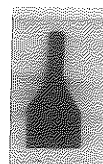
703



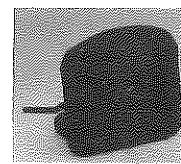
909



1632



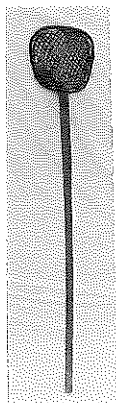
759



778

加工用具

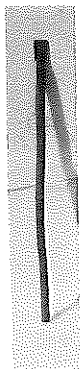
图版20



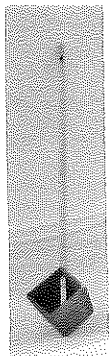
741



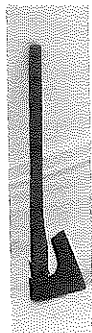
716



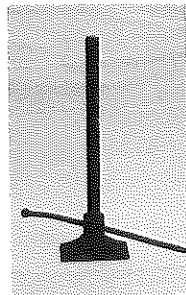
808



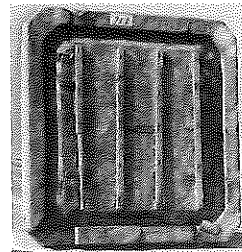
719



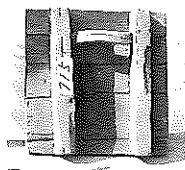
726



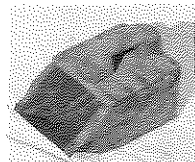
763



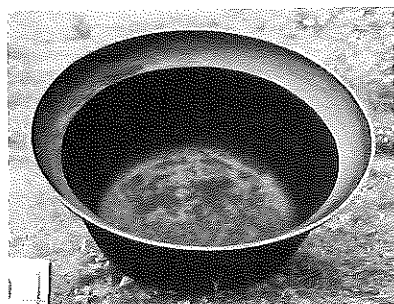
712



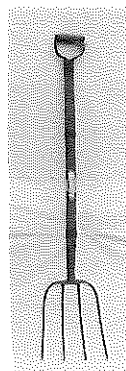
715



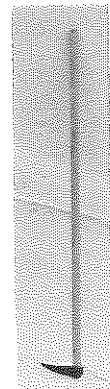
980



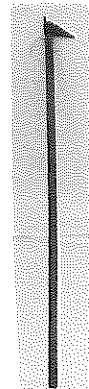
1594



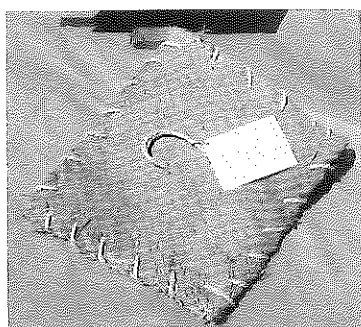
927



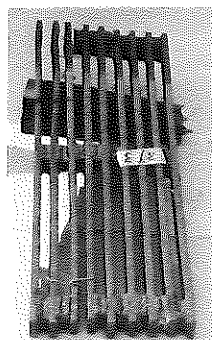
806



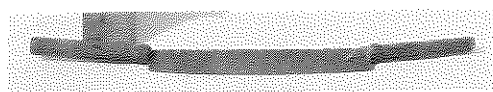
807



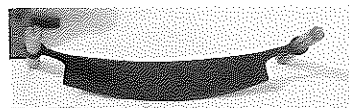
1383



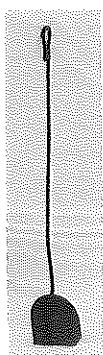
893



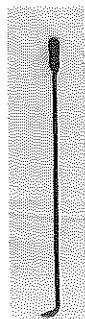
833



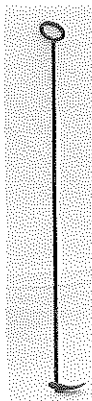
834



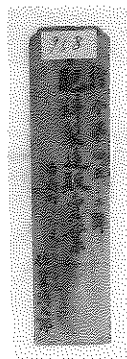
727



736



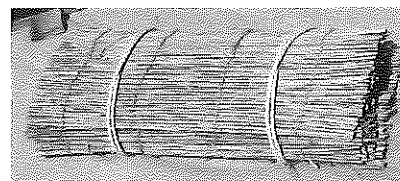
729



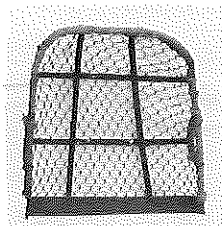
958



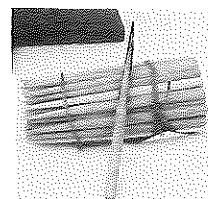
878



1335



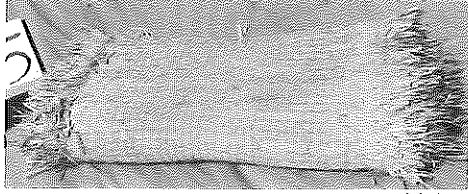
917



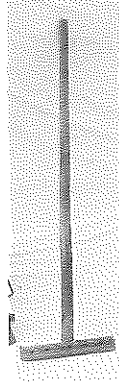
1716

加工用具

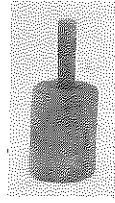
図版21



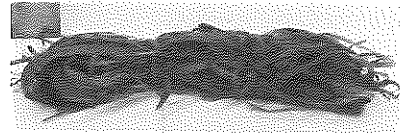
1325



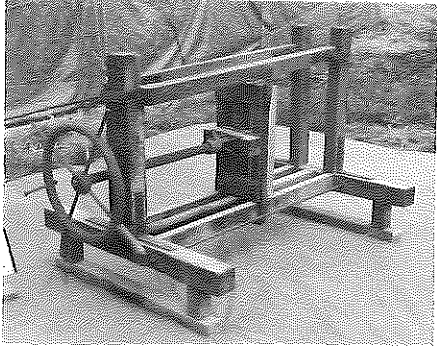
747



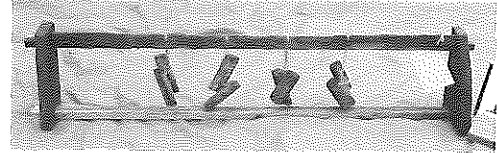
946



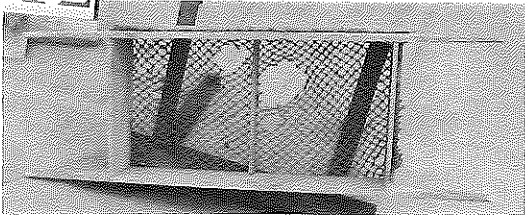
948



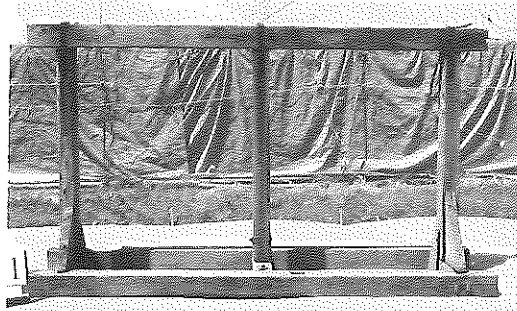
1311



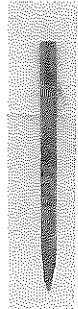
1596



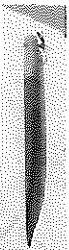
1312



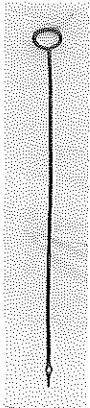
1391



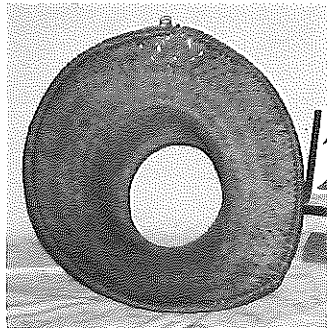
799



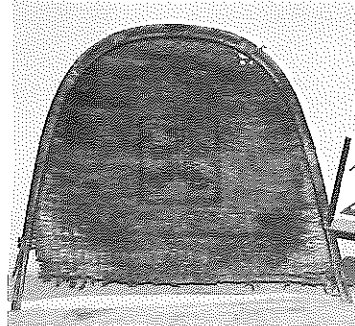
887



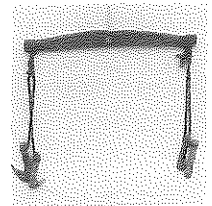
928



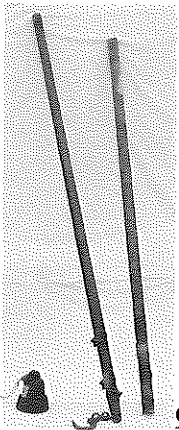
2054



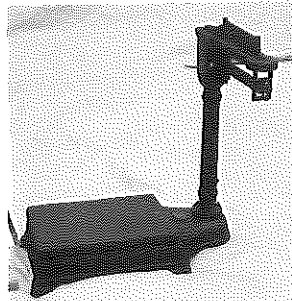
2057



919



943



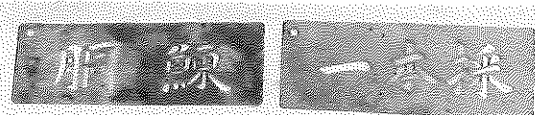
969

1600

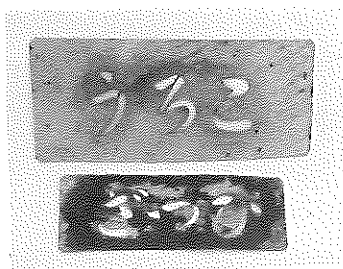


970

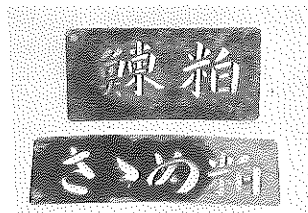
971



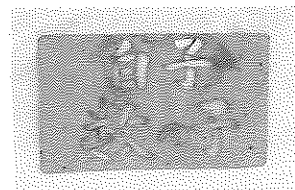
加工用具



972



973



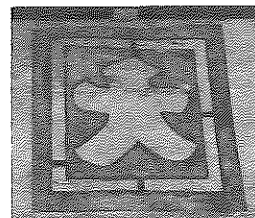
974



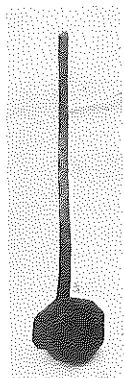
1906



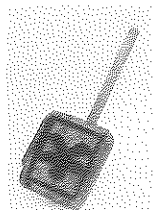
1907



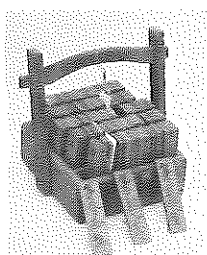
1908



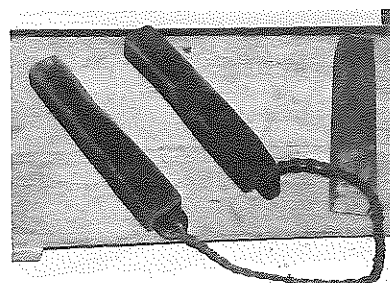
950



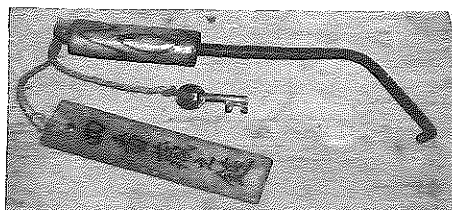
454



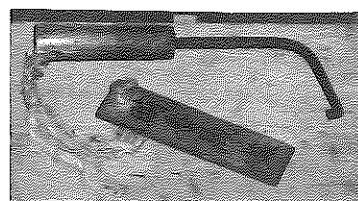
954



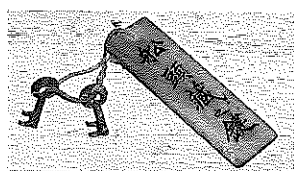
1941



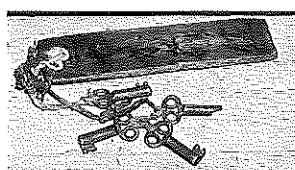
1959



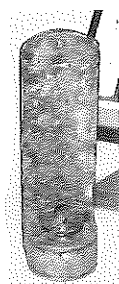
1960



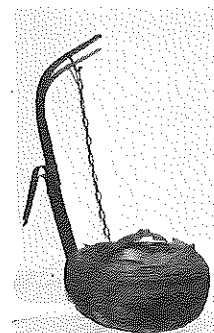
1961



1971



1958



2060

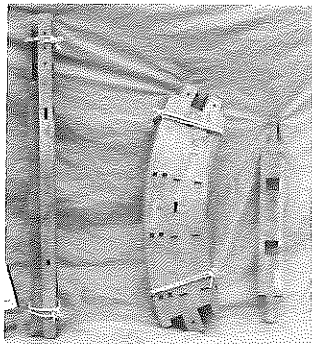
加工用具及びその他



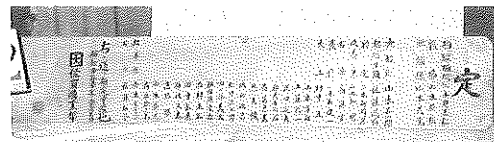
2077



2076



1601



2022

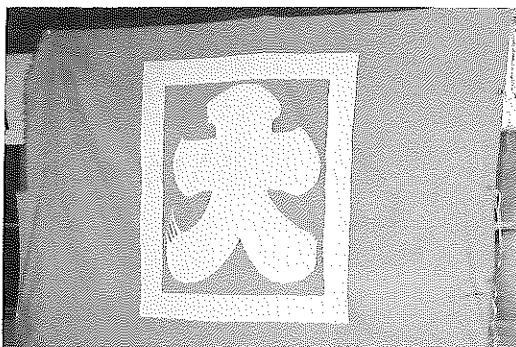


2078

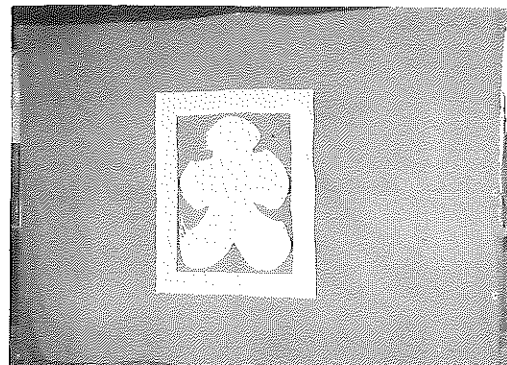


2079

2081



2080



その他

留萌市文化財調査報告

留萌市ニシン漁撈調査

—留萌市礼受地区のニシン漁撈を中心に—

1995. 3

編集 留萌市教育委員会
発行 留萌市教育委員会
印刷 白鷗印刷株式会社
〒077 留萌市錦町2丁目

